



The Salem

1232 sq. ft.

Initial Doc. Date: 01/16/2024

Revision Date: 01/18/2024

Revision #R1c

This document is for illustrational purposes only (it has not been reviewed by an architect or engineer unless otherwise stated in or on this document) and should not be relied on for any purpose other than illustration and general layout of building.

ShedCo, LLC and affiliates assume no liability or responsibility for any mistakes, or errors herein.

All rights reserved by ShedCo, LLC. This document and the information contained herein are confidential and protected from disclosure pursuant to Federal law. Use, dissemination, or copying of this information is strictly prohibited. If you received this document in error, please erase all copies and attachments and notify the sender immediately.

Customer Responsible to verify all local, state, and any jurisdictional codes and building requirements.

Barn House Company

139 Hillcrest Rd.
Russelville, KY 42276

3D View

Page 1 of 12



3D Drawing are for illustrational purposes only and do not represent the actually finishes and or fixtures.



The Salem

1232 sq. ft.

Initial Doc. Date: 01/16/2024

Revision Date: 01/18/2024

Revision #R1c

This document is for illustrational purposes only (it has not been reviewed by an architect or engineer unless otherwise stated in or on this document) and should not be relied on for any purpose other than illustration and general layout of building.

ShedCo, LLC and affiliates assume no liability or responsibility for any mistakes, or errors herein.

All rights reserved by ShedCo, LLC. This document and the information contained herein are confidential and protected from disclosure pursuant to Federal law. Use, dissemination, or copying of this information is strictly prohibited. If you received this document in error, please erase all copies and attachments and notify the sender immediately.

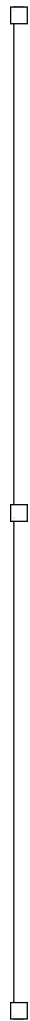
Customer Responsible to verify all local, state, and any jurisdictional codes and building requirements.

Barn House Company

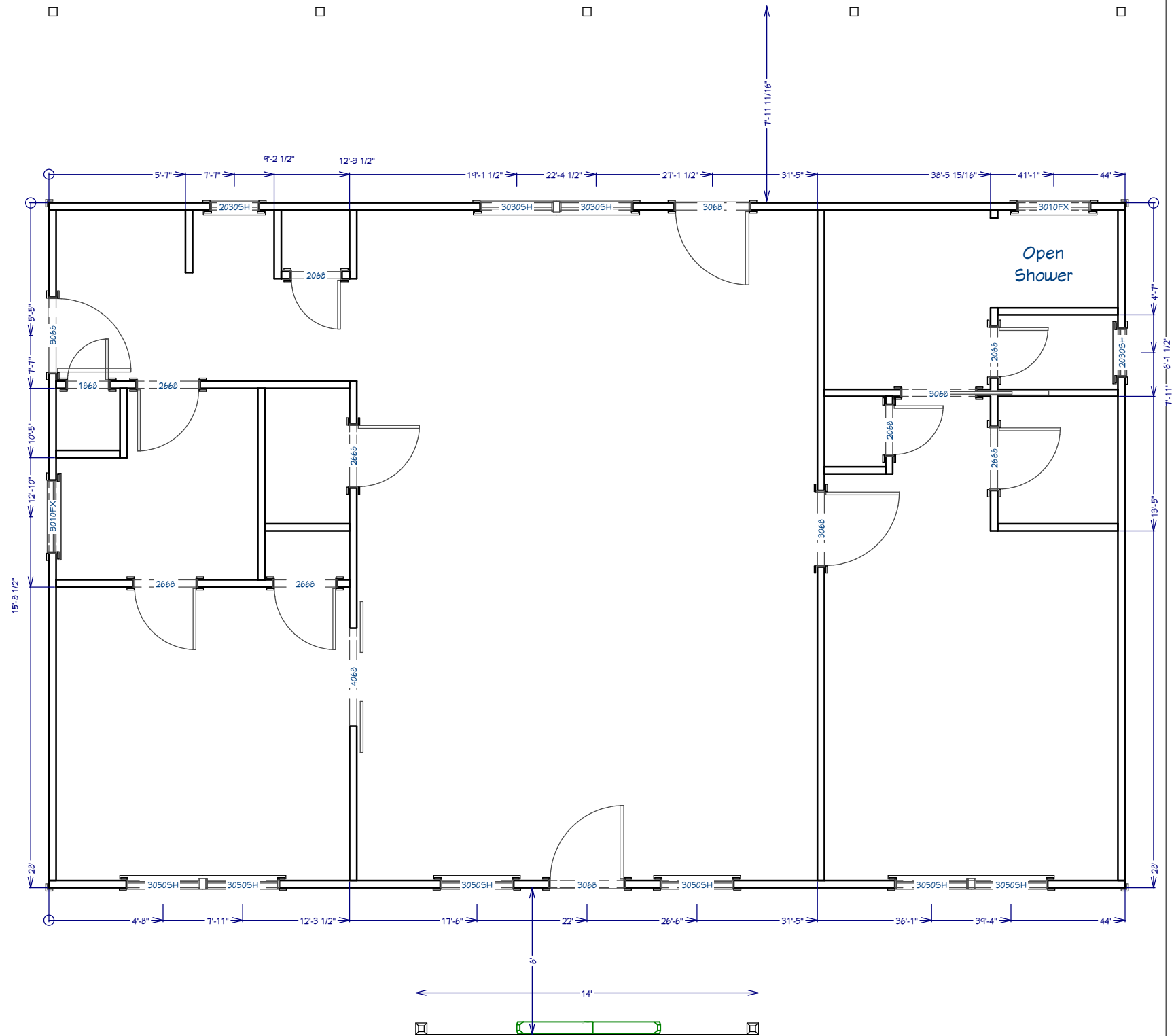
139 Hillcrest Rd.
Russelville, KY 42276

Framing

Page 2 of 12



Car Port
23' 6" x 28'





The Salem

1232 sq. ft.

Initial Doc. Date: 01/16/2024

Revision Date: 01/18/2024

Revision #R1c

This document is for illustrational purposes only (it has not been reviewed by an architect or engineer unless otherwise stated in or on this document) and should not be relied on for any purpose other than illustration and general layout of building.

ShedCo, LLC and affiliates assume no liability or responsibility for any mistakes, or errors herein.

All rights reserved by ShedCo, LLC. This document and the information contained herein are confidential and protected from disclosure pursuant to Federal law. Use, dissemination, or copying of this information is strictly prohibited. If you received this document in error, please erase all copies and attachments and notify the sender immediately.

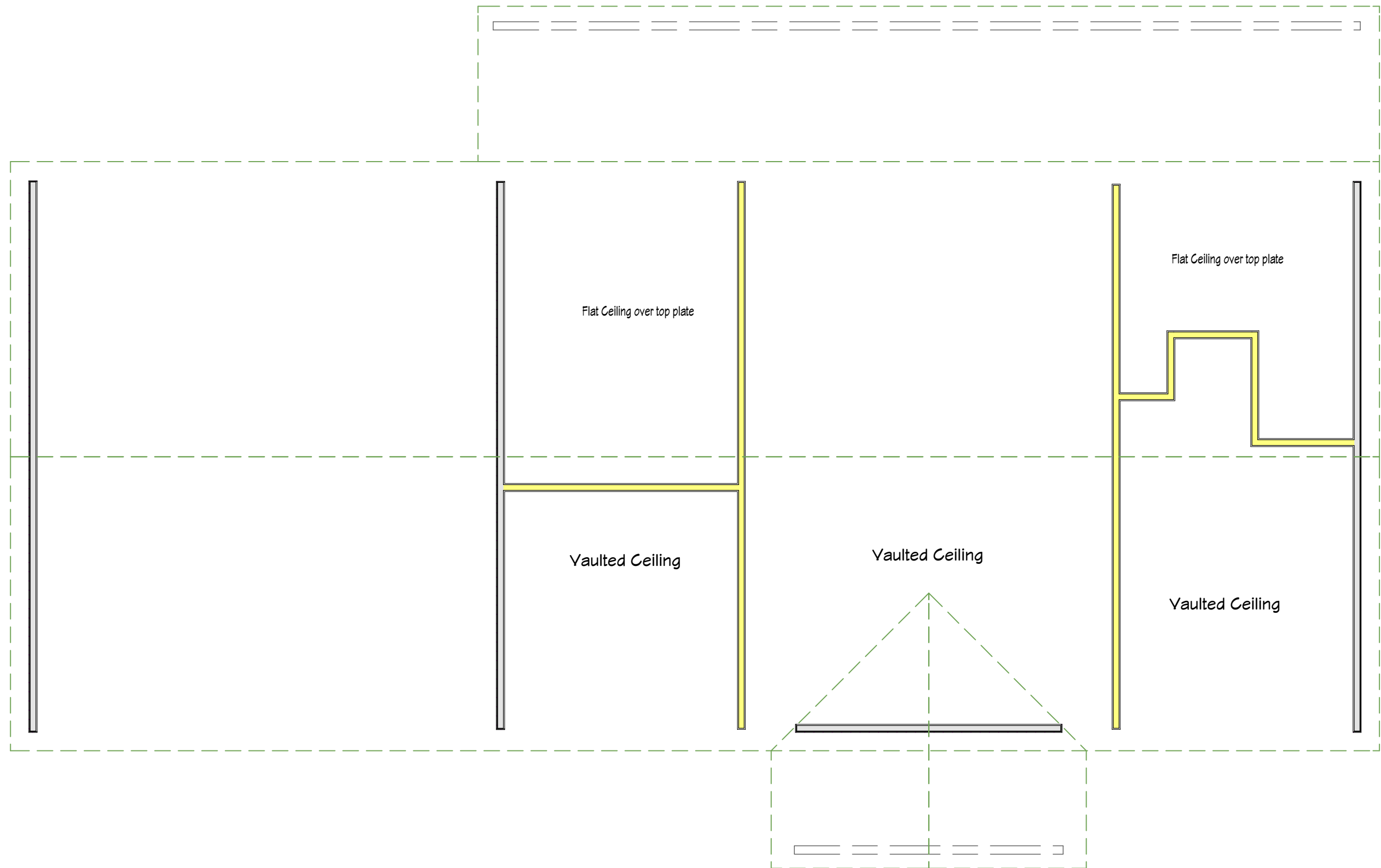
Customer Responsible to verify all local, state, and any jurisdictional codes and building requirements.

Barn House Company

139 Hillcrest Rd.
Russelville, KY 42276

Loft Framing

Page 3 of 12





The Salem

1232 sq. ft.

Initial Doc. Date: 01/16/2024

Revision Date: 01/18/2024

Revision #R1c

This document is for illustrational purposes only (it has not been reviewed by an architect or engineer unless otherwise stated in or on this document) and should not be relied on for any purpose other than illustration and general layout of building.

ShedCo, LLC and affiliates assume no liability or responsibility for any mistakes, or errors herein.

All rights reserved by ShedCo, LLC. This document and the information contained herein are confidential and protected from disclosure pursuant to Federal law. Use, dissemination, or copying of this information is strictly prohibited. If you received this document in error, please erase all copies and attachments and notify the sender immediately.

Customer Responsible to verify all local, state, and any jurisdictional codes and building requirements.

Barn House Company

139 Hillcrest Rd.
Russelville, KY 42276

Front Elevation

Page 4 of 12





The Salem

1232 sq. ft.

Initial Doc. Date: 01/16/2024

Revision Date: 01/18/2024

Revision #R1c

This document is for illustrational purposes only (it has not been reviewed by an architect or engineer unless otherwise stated in or on this document) and should not be relied on for any purpose other than illustration and general layout of building.

ShedCo, LLC and affiliates assume no liability or responsibility for any mistakes, or errors herein.

All rights reserved by ShedCo, LLC. This document and the information contained herein are confidential and protected from disclosure pursuant to Federal law. Use, dissemination, or copying of this information is strictly prohibited. If you received this document in error, please erase all copies and attachments and notify the sender immediately.

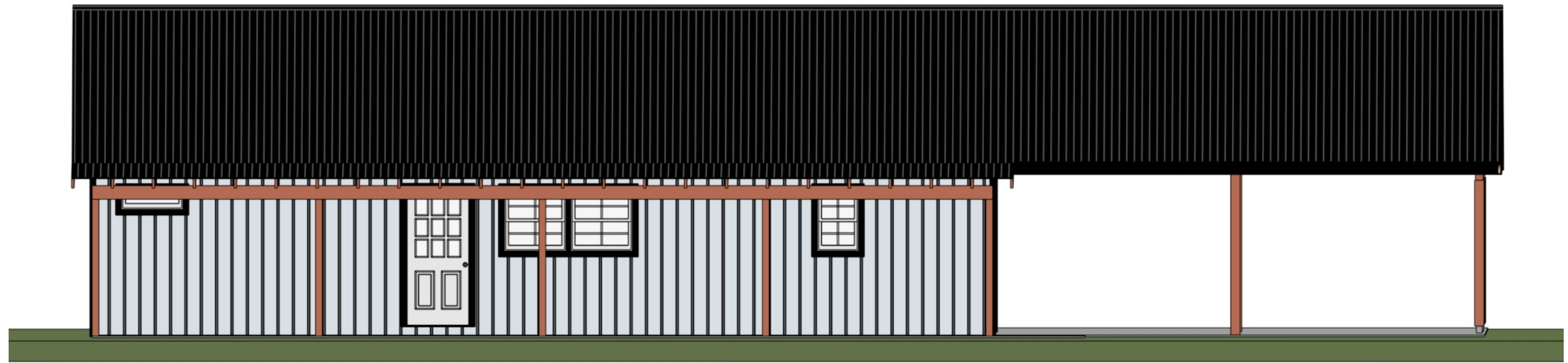
Customer Responsible to verify all local, state, and any jurisdictional codes and building requirements.

Barn House Company

139 Hillcrest Rd.
Russelville, KY 42276

Back Elevation

Page 5 of 12





The Salem
1232 sq. ft.

Initial Doc. Date: 01/16/2024

Revision Date: 01/18/2024

Revision #R1c

This document is for illustrational purposes only (it has not been reviewed by an architect or engineer unless otherwise stated in or on this document) and should not be relied on for any purpose other than illustration and general layout of building.

ShedCo, LLC and affiliates assume no liability or responsibility for any mistakes, or errors herein.

All rights reserved by ShedCo, LLC. This document and the information contained herein are confidential and protected from disclosure pursuant to Federal law. Use, dissemination, or copying of this information is strictly prohibited. If you received this document in error, please erase all copies and attachments and notify the sender immediately.

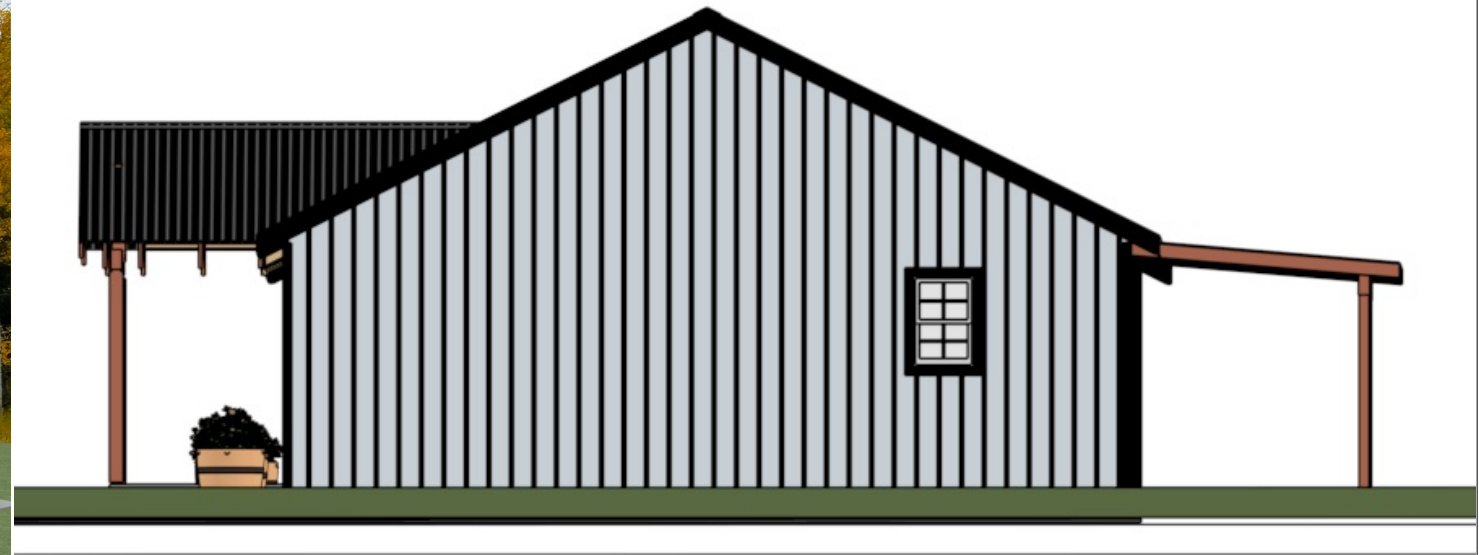
Customer Responsible to verify all local, state, and any jurisdictional codes and building requirements.

Barn House Company

139 Hillcrest Rd.
Russelville, KY 42276

Side Elevations

Page 6 of 12





The Salem
1232 sq. ft.

Initial Doc. Date: 01/16/2024
Revision Date: 01/18/2024
Revision #R1c

This document is for illustrational purposes only (it has not been reviewed by an architect or engineer unless otherwise stated in or on this document) and should not be relied on for any purpose other than illustration and general layout of building.

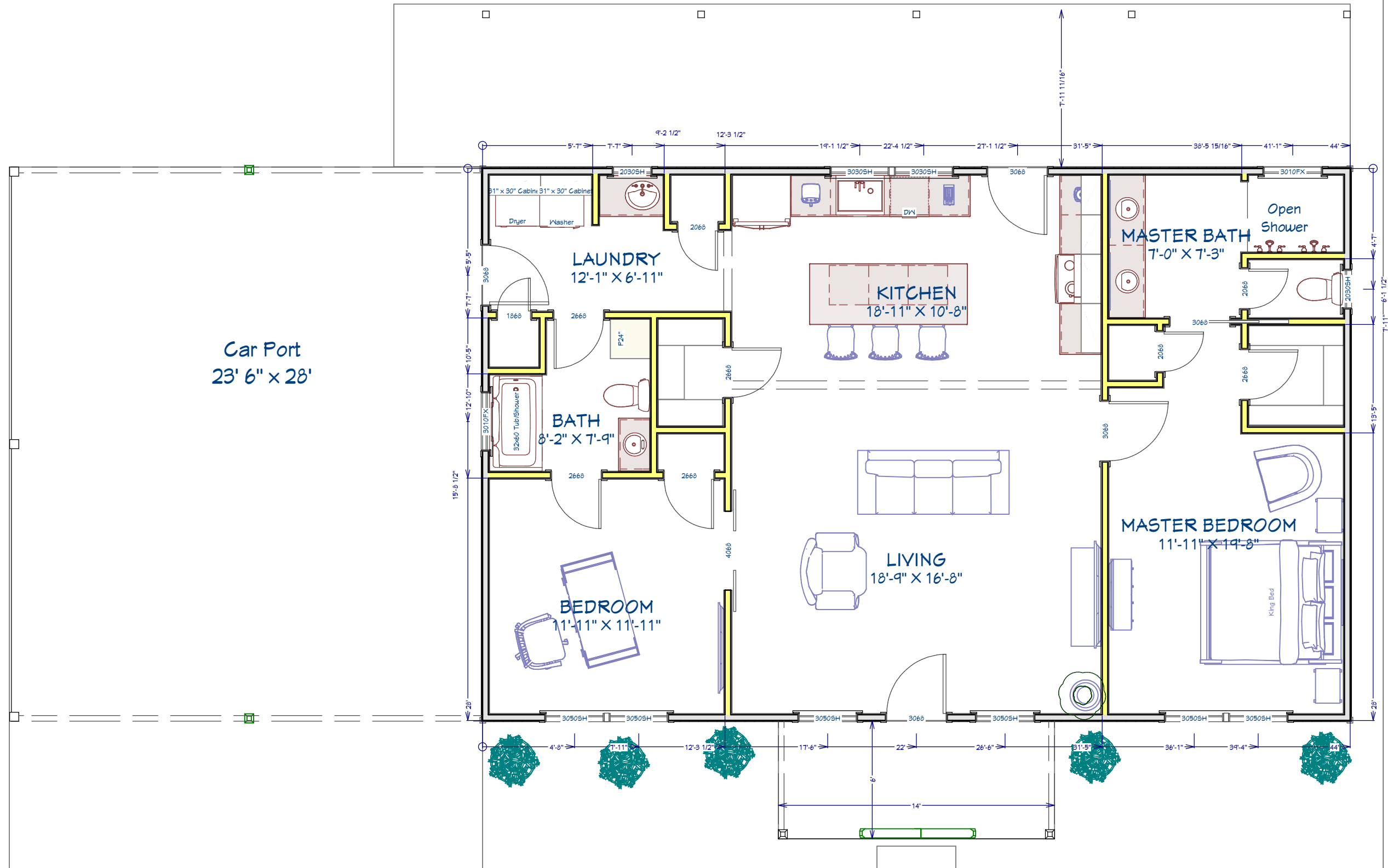
ShedCo, LLC and affiliates assume no liability or responsibility for any mistakes, or errors herein.

All rights reserved by ShedCo, LLC. This document and the information contained herein are confidential and protected from disclosure pursuant to Federal law. Use, dissemination, or copying of this information is strictly prohibited. If you received this document in error, please erase all copies and attachments and notify the sender immediately.

Customer Responsible to verify all local, state, and any jurisdictional codes and building requirements.

Barn House Company
139 Hillcrest Rd.
Russelville, KY 42276

Floor Plan
Page 7 of 12



All Layers



The Salem

1232 sq. ft.

Initial Doc. Date: 01/16/2024

Revision Date: 01/18/2024

Revision #R1c

This document is for illustrational purposes only (it has not been reviewed by an architect or engineer unless otherwise stated in or on this document) and should not be relied on for any purpose other than illustration and general layout of building.

ShedCo, LLC and affiliates assume no liability or responsibility for any mistakes, or errors herein.

All rights reserved by ShedCo, LLC. This document and the information contained herein are confidential and protected from disclosure pursuant to Federal law. Use, dissemination, or copying of this information is strictly prohibited. If you received this document in error, please erase all copies and attachments and notify the sender immediately.

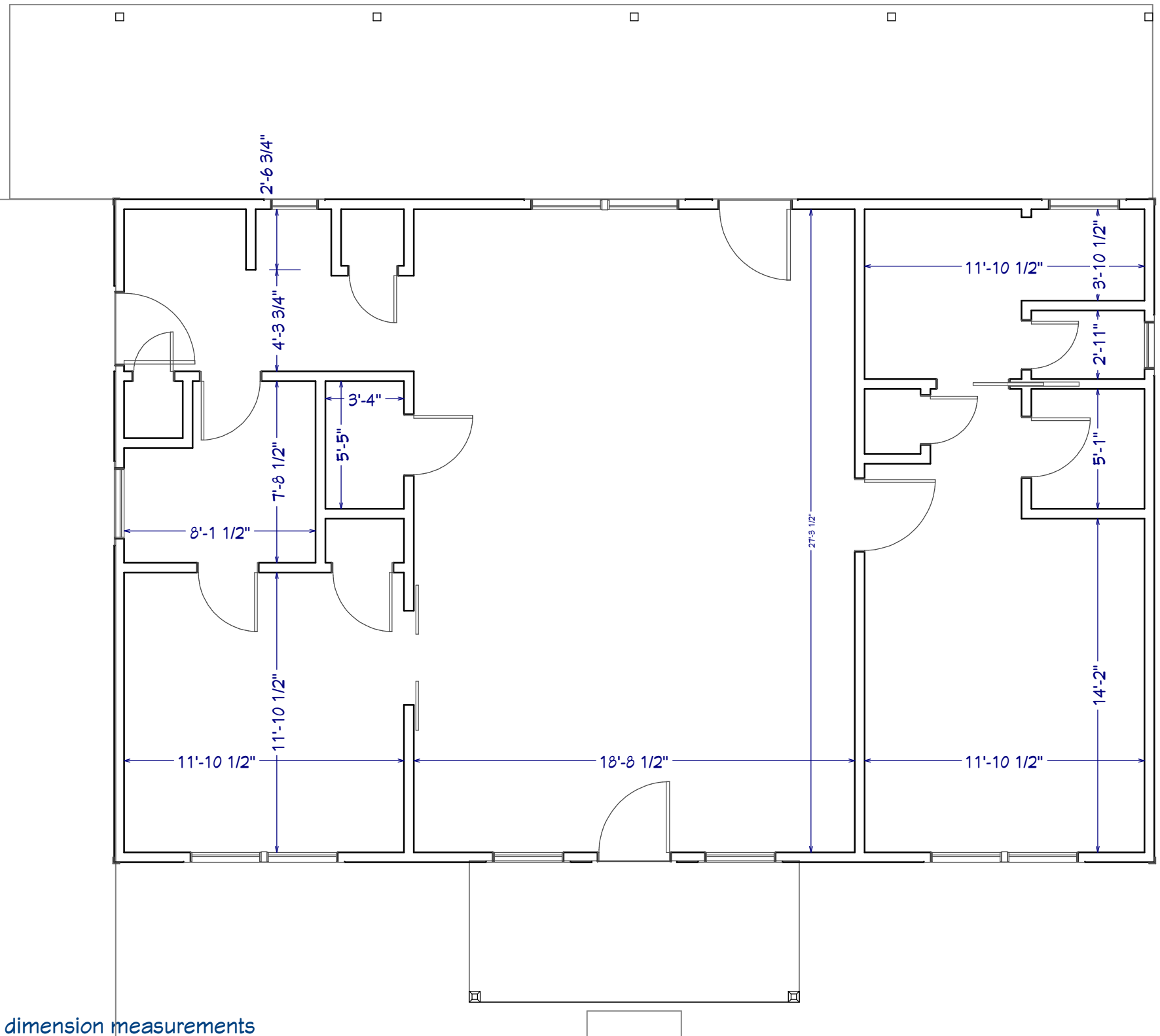
Customer Responsible to verify all local, state, and any jurisdictional codes and building requirements.

Barn House Company

139 Hillcrest Rd.
Russelville, KY 42276

Room Dimensions

Page 8 of 12



Room dimension measurements are approximate only. All floor plan measurements override these measurements. These measurements may differ 1-4" depending on wall coverings, trims, etc.



The Salem
1232 sq. ft.

Initial Doc. Date: 01/16/2024

Revision Date: 01/18/2024

Revision #R1c

This document is for illustrational purposes only (it has not been reviewed by an architect or engineer unless otherwise stated in or on this document) and should not be relied on for any purpose other than illustration and general layout of building.

ShedCo, LLC and affiliates assume no liability or responsibility for any mistakes, or errors herein.

All rights reserved by ShedCo, LLC. This document and the information contained herein are confidential and protected from disclosure pursuant to Federal law. Use, dissemination, or copying of this information is strictly prohibited. If you received this document in error, please erase all copies and attachments and notify the sender immediately.

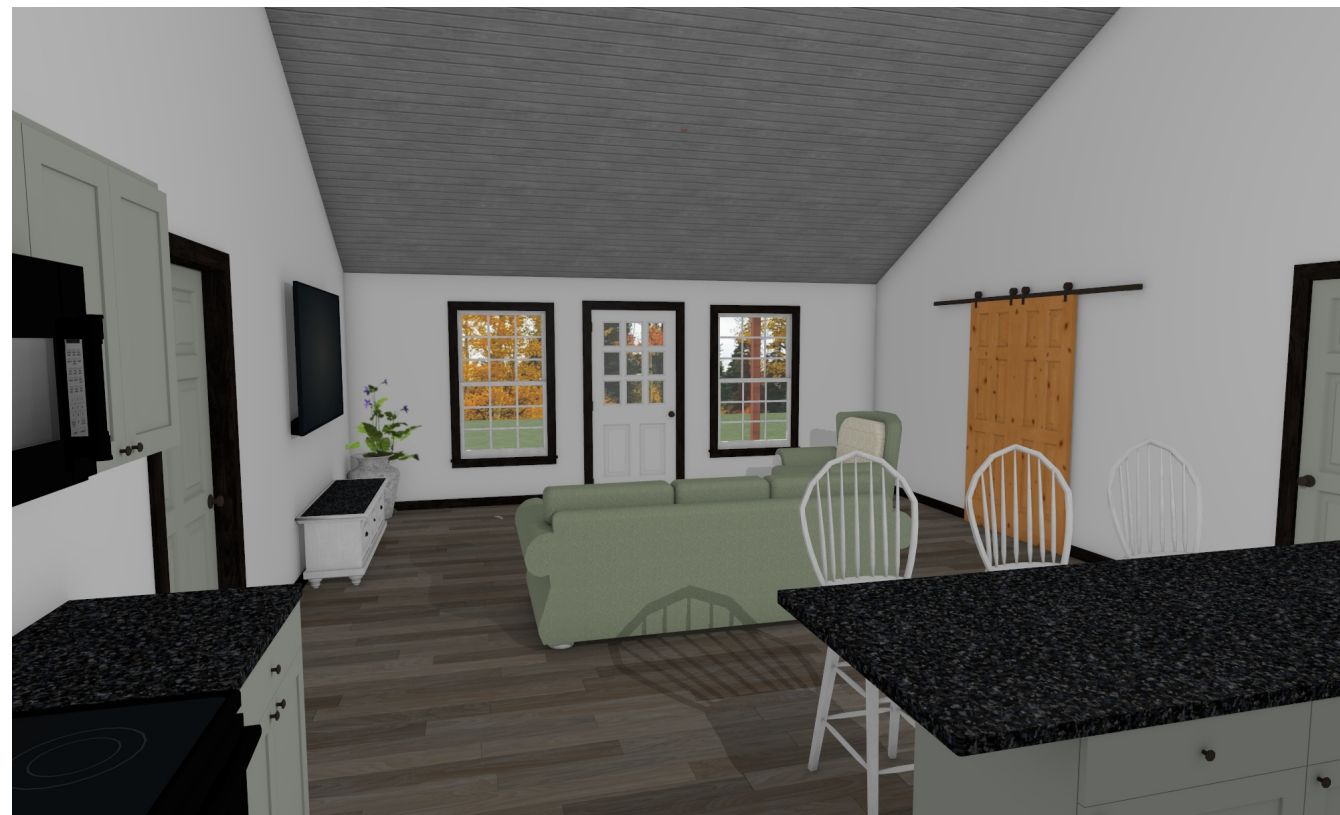
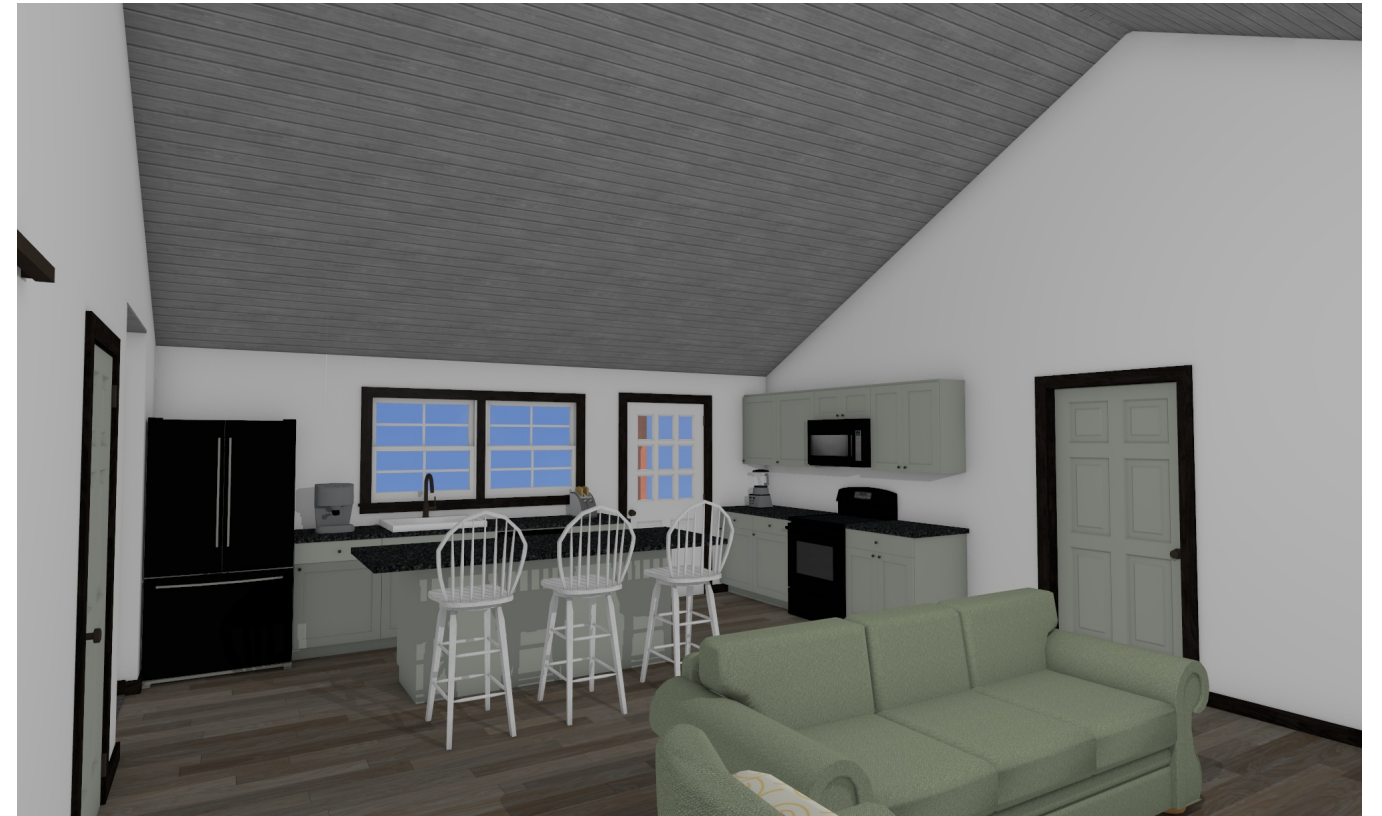
Customer Responsible to verify all local, state, and any jurisdictional codes and building requirements.

Barn House Company

139 Hillcrest Rd.
Russelville, KY 42276

Living Room & Kitchen

Page 9 of 12





The Salem

1232 sq. ft.

Initial Doc. Date: 01/16/2024

Revision Date: 01/18/2024

Revision #R1c

This document is for illustrational purposes only (it has not been reviewed by an architect or engineer unless otherwise stated in or on this document) and should not be relied on for any purpose other than illustration and general layout of building.

ShedCo, LLC and affiliates assume no liability or responsibility for any mistakes, or errors herein.

All rights reserved by ShedCo, LLC. This document and the information contained herein are confidential and protected from disclosure pursuant to Federal law. Use, dissemination, or copying of this information is strictly prohibited. If you received this document in error, please erase all copies and attachments and notify the sender immediately.

Customer Responsible to verify all local, state, and any jurisdictional codes and building requirements.

Barn House Company

139 Hillcrest Rd.
Russelville, KY 42276

Master Suite

Page 10 of 12





The Salem

1232 sq. ft.

Initial Doc. Date: 01/16/2024

Revision Date: 01/18/2024

Revision #R1c

This document is for illustrational purposes only (it has not been reviewed by an architect or engineer unless otherwise stated in or on this document) and should not be relied on for any purpose other than illustration and general layout of building.

ShedCo, LLC and affiliates assume no liability or responsibility for any mistakes, or errors herein.

All rights reserved by ShedCo, LLC. This document and the information contained herein are confidential and protected from disclosure pursuant to Federal law. Use, dissemination, or copying of this information is strictly prohibited. If you received this document in error, please erase all copies and attachments and notify the sender immediately.

Customer Responsible to verify all local, state, and any jurisdictional codes and building requirements.

Barn House Company

139 Hillcrest Rd.
Russelville, KY 42276

Bedroom/Office

Page 11 of 12





The Salem

1232 sq. ft.

Initial Doc. Date: 01/16/2024

Revision Date: 01/18/2024

Revision #R1c

This document is for illustrational purposes only (it has not been reviewed by an architect or engineer unless otherwise stated in or on this document) and should not be relied on for any purpose other than illustration and general layout of building.

ShedCo, LLC and affiliates assume no liability or responsibility for any mistakes, or errors herein.

All rights reserved by ShedCo, LLC. This document and the information contained herein are confidential and protected from disclosure pursuant to Federal law. Use, dissemination, or copying of this information is strictly prohibited. If you received this document in error, please erase all copies and attachments and notify the sender immediately.

Customer Responsible to verify all local, state, and any jurisdictional codes and building requirements.

Barn House Company

139 Hillcrest Rd.
Russelville, KY 42276

Perspective View

Page 12 of 12

